



**Datasheet**

| Controller           |           |
|----------------------|-----------|
| Defrost              | Automatic |
| High/Low Temp. Alarm | Yes       |
| Open Door Alarm      | Yes       |
| Probe Failure Alarm  | Yes       |
| Power Failure Alarm  | Option    |
| USB Connection       | Yes       |
| Datalogging          | Yes       |

| Features                           |                                  |
|------------------------------------|----------------------------------|
| Lock                               | Yes                              |
| LED Light                          | Yes                              |
| Safety Thermostat                  | Option                           |
| Battery Backup for Controller, 48h | Option                           |
| Porthole                           | Yes                              |
| Dry Contact                        | Yes                              |
| Door                               | Standard: Solid<br>Option: Glass |
| Door Features                      | Automatic Closure                |
| Door Reversibility                 | Yes                              |

| Construction             |  |
|--------------------------|--|
| Outer Dimensions, HxWxD  | 1919x595x638                                 |
| Inner Dimensions, HxWxD  | 1587x518x460                                 |
| Volume Gross/net, L      | 381 / 351                                    |
| Weight Gross/Net, kg     | 101 / 99                                     |
| Material Inner Cabinet   | PVC  |
| Material Outer Cabinet   | Painted Steel                                |
| Insulation Thickness, mm | 35   |
| Insulation Type          | Polyurethane with Cyclopentane               |
| Refrigerant              | R600a  |
| Air Distribution         | Forced Air                                   |
| Mobility                 | Standard: Adjustable Feet<br>Option: Castors |

+20°C  
+2°C



**AKS 397**

**Biomedical Refrigerator**



LOW NOISE



ENVIRONMENT FRIENDLY



USER FRIENDLY

| Operation                    |            |
|------------------------------|------------|
| Temperature Range, C°        | +2 to +20  |
| Noise, dB                    | 41         |
| Energy Consumption 24/h, kWh | Solid: 0,7 |
| Frequency, Hz                | 50         |
| Power Supply, V              | 220 / 240  |
| Instant Power Consumption    | N/A        |
| K-Value                      | N/A        |
| Heat Rejection               | N/A        |

| Storage                          |          |
|----------------------------------|----------|
| BioChill™ Shelves (Standard/max) | 5 / 10   |
| Half shelf (Standard/max)        | 1 / 1    |
| Shelf material                   | Aluminum |
| Max Loading pr. Shelf, kg        | 20       |
| BioChill™ Drawers Max. Fit       | 10       |
| Drawer Material                  | Aluminum |
| Max Loading pr. Drawer, kg       | 18       |



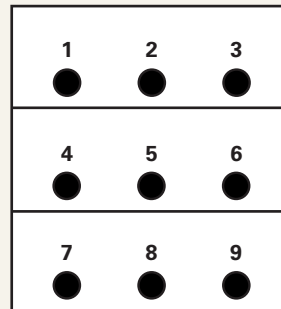
## Temperature Mapping

### Test overview

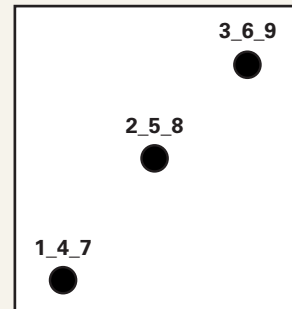
|                     |  |
|---------------------|--|
| Test type           | 9-point test   |
| Test environment    | Controlled conditions, empty cabinet                             |
| Ambient temperature | 20°C   |
| Humidity            | 60%  |
| Set-point           | 5°C  |
| Sensors used        | 25gr tinned brass formed as a cylinder with a diameter of 15,2mm |
| Installation        | Appliance installed according to instruction manual conditions   |
| Refrigerant         | R600a  |

### Sensor position

#### Front View



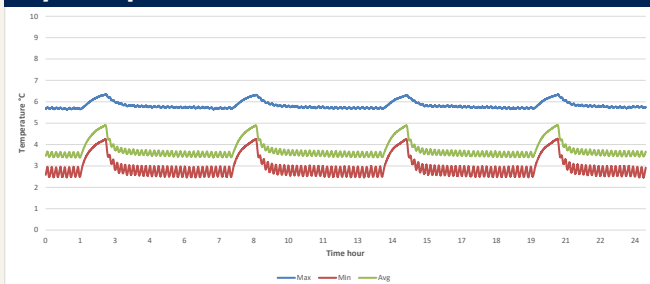
#### Top View



### Sensor temperature

| Sensor position | P1  | P2  | P3  | P4  | P5  | P6  | P7  | P8  | P9  |
|-----------------|-----|-----|-----|-----|-----|-----|-----|-----|-----|
| Max.            | 6,3 | 4,9 | 4,9 | 5   | 4,8 | 5   | 4,8 | 4,3 | 4,4 |
| Avg.            | 5,8 | 4,2 | 4,2 | 3,3 | 3,2 | 3,3 | 3,8 | 3,1 | 3,2 |
| Min.            | 5,6 | 4   | 4   | 2,8 | 2,7 | 2,8 | 3,4 | 2,6 | 2,7 |

### Cyclic operation



### Warm up & Pull down

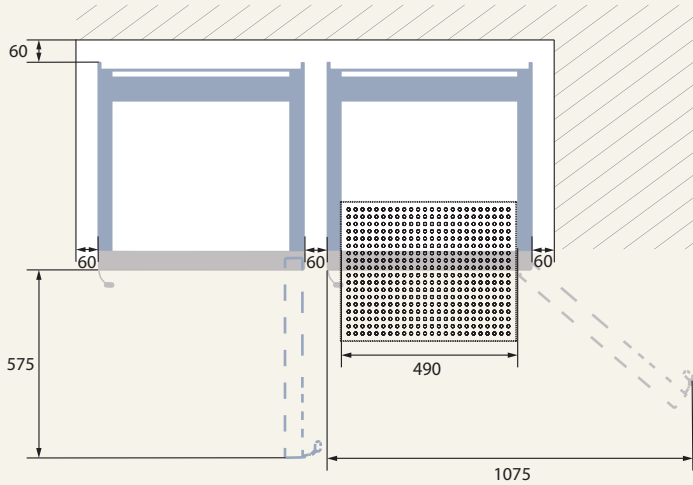


### Typical Performance data

|   |              |
|---|--------------|
| Avg. cabinet temperature                          | 3,8°C        |
| Peak variation from set-point                     | +2,5/-1,2°C  |
| Stability in avg.                                 | 2,7°C        |
| 1 min. door open recovery to 6°C avg. temperature | 15 min.      |
| Cycle rate on/off                                 | 2,6/9,4 min. |
| Duty cycle  | 21,6%        |
| Energy consumption                                | 0,73 kWh/day |
| Pull down time to 6°C avg. temperature            | 50 min.      |
| Hold over time from 5°C to 10°C                   | 72 min.      |
| Sample temperature does not exceed                | 8°C          |

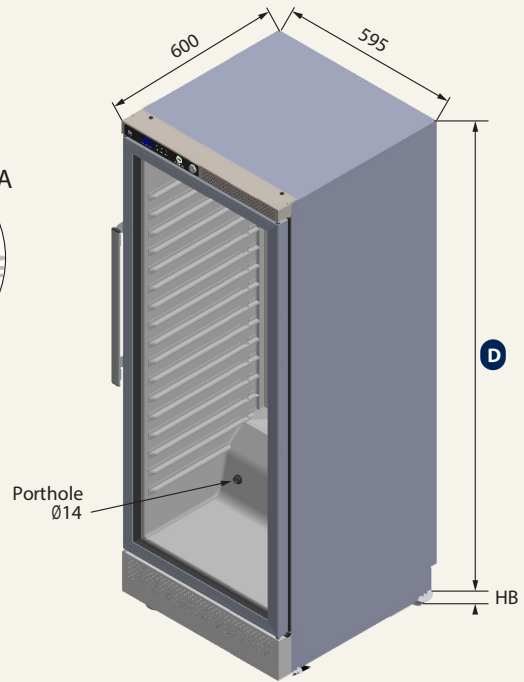
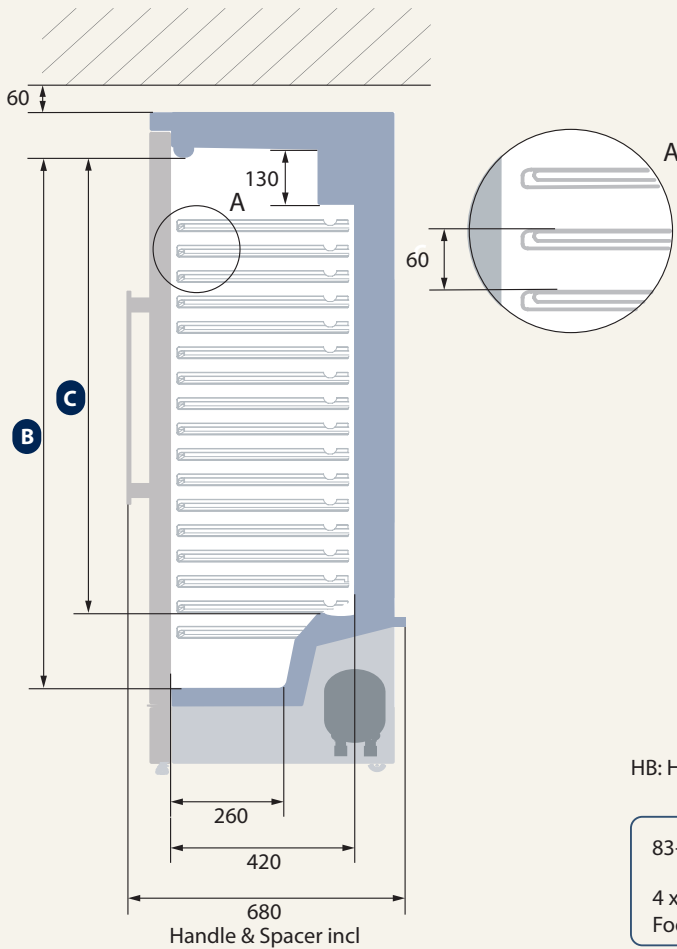


**Dimensions**






| Model   | B    | C    | D    |
|---------|------|------|------|
| AKS 337 | 1260 | 965  | 1535 |
| AKS 397 | 1570 | 1175 | 1835 |

All measurements are in millimeters



HB: Height of base (HB is ajustastable when given value is xx-xxx)

83-101   
4 x Wheel with Footmaster

20-58  13   
Front: 2 x Ajustable foot Back: 2 x Castor